

SmartLF Gx+ 42

INNOVATION IN WIDE FORMAT SCANNERS AND SOFTWARE



High Productivity,
Low Maintenance
Production Scanner

IDEAL FOR:
REPROGRAPHICS, COPY SHOPS, GRAPHICS
DESIGNERS, MAPPING & GIS PROFESSIONALS,
AEC CAD DRAWING OFFICES.

The Colortrac SmartLF Gx+ 42 is the first true 1200dpi optical resolution CCD scanner. It combines the benefits of new, instant-on LED lighting - lower energy requirements, a longer life and reduced environmental impact - with the superior color imaging attributes of CCD technology.

NEW IMPROVED MODEL

Capturing wide format technical documents in bulk just got easier. New improvements to the best-selling Colortrac SmartLF Gx+ 42 makes everyday batch scanning tasks now more efficient, more productive.



Key Features

HIGH, PRODUCTIVITY, LOW MAINTENANCE SCANNER

- ◆ 1200dpi optical with 9600dpi maximum resolution
- ◆ 42" image width - perfect for scanning A0/E-size documents
- ◆ **NEW** Magnetic document guide for easier, more productive loading
- ◆ **NEW** professional MFP stand for scan-to-copy workstation
- ◆ **NEW** Includes SmartWorks EZ SCAN/COPY/EMAIL software
- ◆ **NEW** Document Return Guide for easier document collection
- ◆ Sharp, fine image detail - superb black & white capture
- ◆ CCD¹ technology with extra long-life, instant-on, longlife bi-directional LED² illumination
- ◆ Clean black & white images - excellent grayscale capture
- ◆ Reliable paper feed from advanced 2+4 all-wheel-drive
- ◆ Scans media up to 0.08" (2mm) / 0.8" (20mm) - suits ALL technical documents
- ◆ On-site upgrade from monochrome to color and express color
- ◆ Fast, high quality scans from power-on, no warm-up, no waiting!
- ◆ Compact, space saving design with low power consumption
- ◆ Low maintenance costs, plug and play USB2 connectivity
- ◆ High productivity - scan A0/E-size documents fast at 12ips @ 200dpi mono and 4ips color

Colortrac's 6th generation SmartLF Gx+ 42 range now defines a new industry benchmark. Its combination of instant-on, long-life bi-directional LED illumination, full 1200dpi optical CCD resolution, power-saving ENERGY STAR compliance and fast scan speeds is unavailable in any other product. Importantly, the SmartLF is the only scanner with "scan once" software that works in real-time without a need to rescan, saving you time and money, making you more productive...making the attractively priced SmartLF Gx+ 42 range the best-of-breed in CCD based scanning.



CAD and Technical Drawings



Image Enhancement

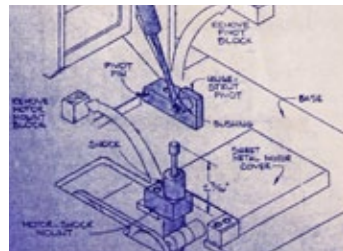
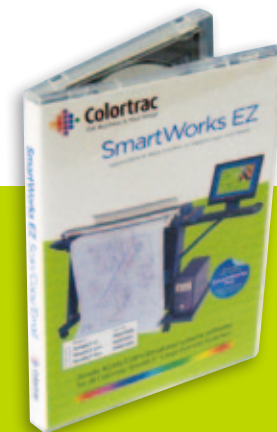


Image Restoration



Archived Blueprints



SmartWorks EZ software -
Everything you need!

Because you need large format scanning solutions that work for you:

Available in three affordable and uniquely upgradeable models, you can start with a monochrome solution and upgrade to a choice of two color scanners if necessary.

The Gx+ 42 includes straightforward SmartWorks EZ SCAN/COPY/EMAIL software which runs in either text/keyboard/mouse or touch-screen* modes - switch between them!

It also Combines wide format scanning and copying in one very easy to use program and has full compatibility with wide format printers through standard Windows drivers.

New SmartWorks Pro SCAN & COPY software is an optional professional extra. Includes thresholding for image restoration and printer drivers for quality color copying.

Specifications

	Gx+ 42m/Gx+ T42m	Gx+ 42c/Gx+ T42c	Gx+ 42e/Gx+T42e
	mono/grayscale	+Color	+Express Color
Upgradeable	m → c	c → e	N/A
Optical Resolution	1200dpi	1200dpi	1200dpi
Interpolated Resolution	9600dpi	9600dpi	9600dpi
Max Scan Width	42" (106.7cm)	42" (106.7cm)	42" (106.7cm)
Max Media Width	46" (116.8cm)	46" (116.8cm)	46" (116.8cm)
Max Media Thickness	0.08" (2mm)/0.8" (20mm)	0.08" (2mm)/0.8" (20mm)	0.08" (2mm)/0.8" (20mm)
Accuracy	+/-0.1% +/-1 pixel	+/-0.1% +/-1 pixel	+/-0.1% +/-1 pixel
Data Capture (color/grayscale)	16-bit	48-bit/16-bit	48-bit/16-bit
Color Space	N/A	RAW RGB/sRGB	RAW RGB/sRGB
Scan Speed 1-bit mono (in/sec) @200dpi	12.00	12.00	12.00
Scan speed 24-bit color (in/sec) @200dpi	N/A	1.00	4.00
Paper Path	Face-down, front entry, rear exit		
Interface	High Speed USB 2.0/Windows Image Acquisition (WIA)/Still Image Interface (STI)		
Power Requirements	External power supply 100-250 VAC autosensing +/-10%, 50-60Hz Scanner power consumption: less than 40VA (scanning) / 4.2 WVA(standby)		
Weight & Dimensions (WxHxD)	97lbs (44 kg) 56.7 x 7 x 14.6" (114 x 18 x 37cm)		
Host Platform	Windows XP, Windows Vista -32-bit and 64-bit architectures, Win 7		
Certifications	CB, CE, FCC, UL, RoHS. ENERGY STAR®		
Included Software	SmartWorks EZ SCAN/COPY/EMAIL software - supports TIFF, JPEG, PNG & PDF; WIA/STI interface.		
OPTIONAL Software	SmartWorks Pro SCAN & COPY software - industry leading, professional scanning and color-copying software.		

¹CCD (Charged coupled device). ²Unlike fluorescent tubes, LEDs only come on when scanning. They have an estimated working-life of 50,000 hours or 6 years scanning 24/7.

[For full details of host system requirements please go to: http://www.colortrac.com/support/system_requirements.htm.] Colortrac Ltd makes no warranty of any kind with respect to the information contained in this document and reserves the right to change specifications without notice. Colortrac and Smart LF® are trademarks of Colortrac Ltd. All other trademarks are the property of their respective owners. Copyright © 2010 Colortrac Ltd. COLORTRAC SMARTLF WIDE FORMAT SCANNERS ARE DESIGNED AND MANUFACTURED BY COLORTRAC.

YOUR COLORTRAC STOCKIST

Colortrac Limited

Colortrac HQ and Factory
 3-5 Brunel Court, Burrell Road,
 St Ives, Cambs PE27 3LW, UK
 Tel: +44 1480 464618
 Fax: +44 1480 464620

Colortrac Inc.

4431-A Brookfield Corporate Drive
 Chantilly, Virginia 20151, USA
 Tel: +1 703 717 5631
 Fax: +1 703 717 5361

Colortrac Japan

12th floor, 1203
 Yokohama creation square,
 5-1 Sakae-Cho
 Kanagawa-Ku, Yokohama-Shi
 Kanagawa-Ken
 221-0052 Japan
 Tel: +81(0)45 548 6991
 Fax: +81(0)45 548 6992

Colortrac Limited (Beijing)

Room 1208, ZhongGuanCun Technology Development
 Building C, No.34 Zhong Guan Cun South Street
 HaiDian District, Beijing 100081, P.R. China
 Tel: +86 (0) 10 62124936
 Fax: +86 (0) 10 62124770

www.colortrac.com